

Legend

- Project Boundary
- ▲ Fixed Platform/Structure
- ✕ Existing Demonstrator Turbine
- Scottish Territorial Waters Boundary

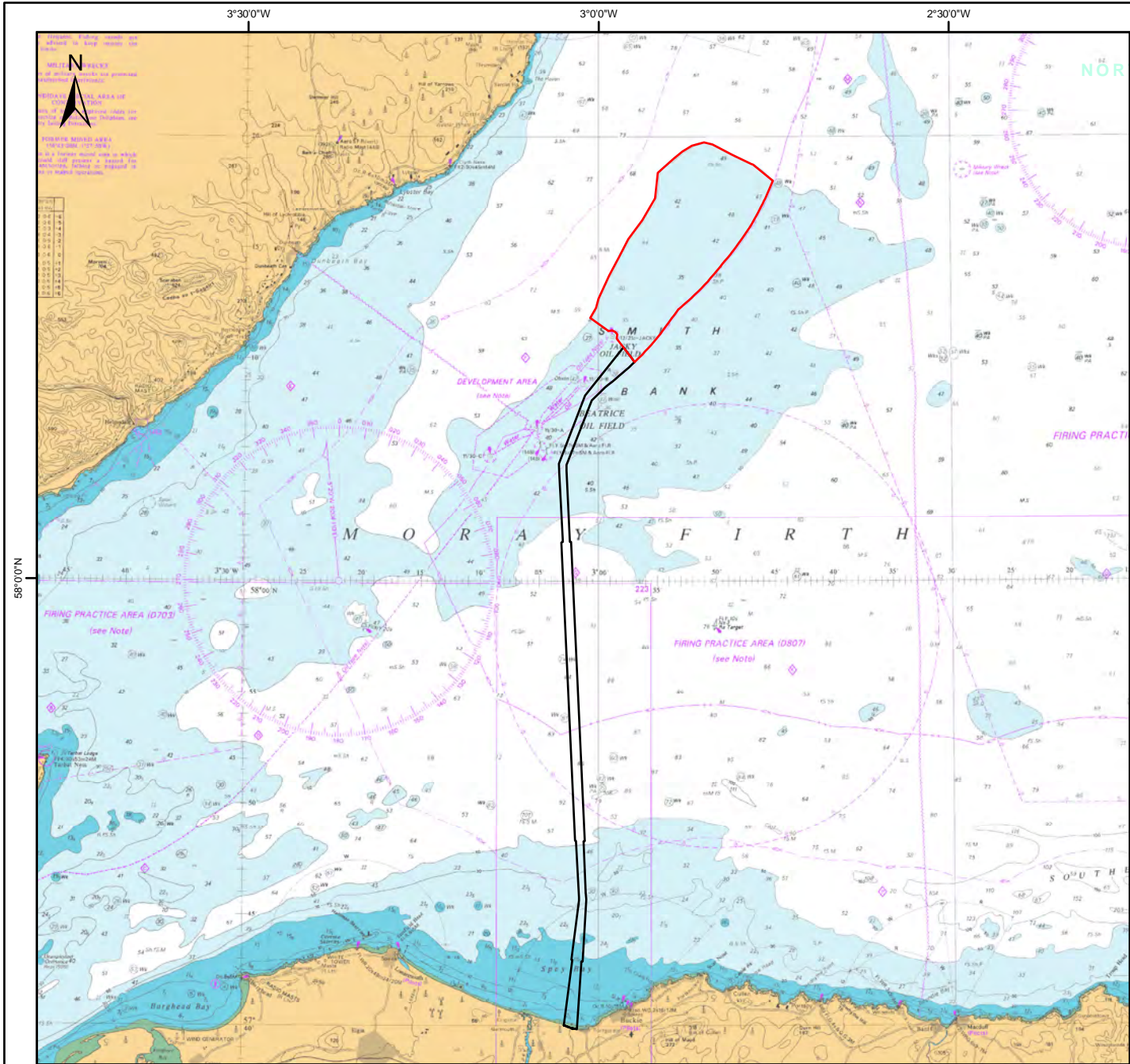
© British Crown and SeaZone Solutions Limited. All rights reserved. Products licence No. 012010.004 & 112009.005. Bathymetry reproduced from the GEBCO Digital Atlas published by the British Oceanographic Data Centre on behalf of IOC and IHO, 2003. SSE Renewables (UK) Ltd. 2012. The concepts and information contained in this document are the copyright of SSE Renewables (UK) Ltd. Use or copying of this document in whole or in part without the written permission of SSE Renewables (UK) Ltd. constitutes an infringement of copyright. SSE Renewables (UK) Ltd. does not warrant that this document is definitive nor free of error and does not accept liability for any loss caused or arising from reliance upon information provided herein.



UK Offshore Development
Figure 1.1
Project Context

Drawn: MM	Checked: MB	Approved: MB	
Date: 09/02/2012	Scale: 1:500,000 @ A4		
Drawing Number: BEA-MAP-EWF-BOWL-148	Revision: 05		
Datum: WGS84	Projection: UTM30N		





Legend

- Beatrice Offshore Wind Farm Site
- Beatrice Offshore Transmission Works Corridor

© British Crown and SeaZone Solutions Limited. All rights reserved. Products licence No. 112009.005. Bathymetry reproduced from the GEBCO Digital Atlas published by the British Oceanographic Data Centre on behalf of IOC and IHO, 2003. SSE Renewables (UK) Ltd. 2011. The concepts and information contained in this document are the copyright of SSE Renewables (UK) Ltd. Use or copying of the document in whole or in part without the written permission of SSE Renewables (UK) Ltd constitutes an infringement of copyright. SSE Renewables (UK) Ltd. does not warrant that this document is definitive nor free of error and does not accept liability for any loss caused or arising from reliance upon information provided herein.



UK Offshore Development
Figure 1.2
Project Boundary

Drawn: MM	Checked: MB	Approved: MB	
Date: 09/12/2011	Scale: 1:500,000 @ A4		
Drawing Number: BEA-MAP-EWF-BOWL-149	Revision: 05		
Datum: WGS84	Projection: UTM30N		



LIST OF FIGURES

- 1.1 Project Context
- 1.2 Project Boundary
- 4.1 Cumulative Developments: UK Offshore Wind Farms
- 4.2 Cumulative Developments: Moray Firth Offshore Wind and Subsea Cables
- 4.3 Cumulative Developments: Oil and Gas Developments
- 4.4 Cumulative Developments: Ports & Harbours and Sea Disposal
- 4.5 Cumulative Developments: Onshore Wind Farms
- 6.1 Offshore Wind Farm Development Areas
- 6.2 Grid Connection Point Options and 14 Offshore Transmission Works Route Options
- 6.3 Landfall Options on the Moray Coast
- 6.4 Offshore Transmission Works Route Options
- 8.1a International & European Designations within 100 km of the Wind Farm Site - Orkney and the Far North
- 8.1b International & European Designations within 100 km of the Wind Farm Site - North East Scotland
- 8.1c International & European Designations within 100 km of the Wind Farm Site - Moray Firth
- 8.2 National and International Designations within 20 km of Offshore Transmission Works Corridor Landfall
- 9.1 Identified Physical and Coastal Process Receptors
- 9.2 Data and Deployment Locations in the Moray Firth
- 9.3 Seabed Sediments Within and Near the Application Site
- 9.4 Modelled Near-Field Spring Tidal Flow Pattern
- 9.5 Swath Bathymetry of the Application Site

9.6	Bedload and Longshore Sediment Transport in the Moray Firth
9.7	Typical Sediment Plume Resulting from Dredging Overspill (Ninth Foundation in Sequence)
9.8	Maximum Deposition Thickness of Poorly Sorted Fine Sediments
9.9	Effect of the BOWL Development on Tidal Water Levels (Mean Spring Tide, GBS)
9.10	Effect of the BOWL Development on Tidal Current Speed (Mean Spring Tide, GBS)
9.11	Effect of BOWL Development on Wave Height (GBS, 1:1 Year Return Period)
9.12	Effect of BOWL Development on Wave Height (GBS, 1:10 Year Return Period)
9.13	Effect of BOWL Development on Wave Height (GBS, 1:50 Year Return Period)
9.14	Combined Effect of the BOWL and MORL Developments on Tidal Water Levels (Mean Spring Tides, GBS)
9.15	Combined Effect of the BOWL and MORL Developments on Tidal Current Speed (Mean Spring Tides, GBS)
9.16	Combined Effect of the BOWL and MORL Developments on Wave Height (GBS, 1:1 Year Return Period)
9.17	Combined Effect of the BOWL and MORL Developments on Wave Height (GBS, 1:10 Year Return Period)
9.18	Combined Effect of the BOWL and MORL Developments on Wave Height (GBS, 1:50 Year Return Period)
10.1	Grab and Camera Survey Stations for Fauna and Sediments including Contaminant Samples
10.2	Benthic Trawl Stations within Study Area
10.3	Main Sediment Types at Grab Sampling Sites According to BGS Classification
10.4	Percentage Contributions of Mud, Sand and Gravel in Sediment Samples
10.5	Distribution of Biotopes and Biotope Complexes in the Study Area
10.6	Biotope Map Based on Surveys of the Moray Firth Round 3 Zone and Beatrice Offshore Wind Farm

-
- 11.1 Study Areas
 - 11.2 Live Weight (Tonnes) by Species in the Regional and Local Study Area (MMO Landings Data)
 - 11.3 90dBht (Species) Impact Ranges for Fish Species with Different Hearing Abilities
 - 11.4 75 & 90dBht Dab Impact Range with Plaice Spawning Grounds (Coull et al., 1998)
 - 11.5 75dBht & 90dBht Salmon Impact Ranges with Scottish Salmon SAC's
 - 11.6 75 & 90dBht Cod Impact Range with Cod Spawning Grounds (Coull et al., 1998)
 - 11.7 75 & 90dBht Herring Impact Range with Gravel and Sandy-Gravel Areas and Herring Spawning Grounds (Coull et al., 1998)
 - 11.8 Worst Case Loss of Habitat with Gravel and Sandy-Gravel Areas and Herring Spawning Grounds (Coull et al., 1998)
 - 12.1 Predicted Probability of Encountering 'Dolphins' in Each 4x4 km Grid Cell Based on 2009 & 2010 Data Based on 2009 & 2010 Data
 - 12.2 Predicted Probability of Encountering Bottlenose Dolphins in Each 4x4 km Grid Cell Based on 2009 & 2010 Data
 - 12.3 Variation in the probability of detecting dolphins on T-PODs at different coastal sites around the Moray Firth SAC (Jan-Dec 2008)
 - 12.4 Harbour Porpoise Density Estimates Across the Moray Firth per 4x4 km Cell
 - 12.5 Predicted Numbers of Harbour Seals from the Dornoch Forth SAC and Loch Fleet NNR in Different 4x4 km Grid Cells Across the Moray Firth
 - 12.6 Grey Seal At-Sea Usage Around the BOWL/MORL Sites
 - 12.7 BOWL Simultaneous Piling Scenario for Bottlenose Dolphin
 - 12.8 BOWL Simultaneous Piling Scenario for Harbour Porpoise
 - 12.9 BOWL Simultaneous Piling Scenario for Harbour (Common) Seal
 - 12.10 BOWL Simultaneous Piling Scenario for Grey Seal
 - 12.11 BOWL and MORL Cumulative Piling Scenario for Bottlenose Dolphin
 - 12.12 BOWL and MORL Cumulative Piling Scenario for Harbour Porpoise

12.13	BOWL and MORL Cumulative Piling Scenario for Harbour (Common) Seal
12.14	BOWL and MORL Cumulative Piling Scenario for Grey Seal
13.1	Special Protection Areas in the vicinity of Beatrice Offshore Wind Farm
13.2	Boat-based transect layout used in ornithological surveys
13.3	Boat-based observations of fulmar between October 2009 and September 2011
13.4	Boat-based observations of sooty shearwater between October 2009 and September 2011
13.5	Boat-based observations of gannet between October 2009 and September 2011
13.6	Boat-based observations of shag between October 2009 and September 2011
13.7	Boat-based observations of Arctic skua between October 2009 and September 2011
13.8	Boat-based observations of great skua between October 2009 and September 2011
13.9	Boat-based observations of kittiwake between October 2009 and September 2011
13.10	Boat-based observations of great black-backed gull between October 2009 and September 2011
13.11	Boat-based observations of herring gull between October 2009 and September 2011
13.12	Boat-based observations of Arctic tern between October 2009 and September 2011
13.13	Boat-based observations of common guillemot between October 2009 and September 2011
13.14	Boat-based observations of razorbill between October 2009 and September 2011
13.15	Boat-based observations of puffin between October 2009 and September 2011
15.1	Site Location: Wrecks, Obstructions & Geophysical Targets
15.2	Designated Onshore Cultural Heritage Assets
16.1	Study Areas

16.2	Salmon and Sea Trout Study Areas
16.3	Relative Value by Species in the National Study Area, Average 2000 - 2009
16.4	Relative Value by Vessel Size in the Regional Study Area, Average 2000 - 2009
16.5	Relative Value of Scallops in the UK, Average 2000 - 2009
16.6	Moray Firth, Commercial Landings Shellfish, Over-15m Vessels only, 2008
16.7	Satellite (VMS) Density of UK over-15m Vessels in the Regional Study Area, Dredge Gear Only, 2009
16.8	Scallop Fishing Grounds by Vessel
16.9	Satellite (VMS) Density of UK over-15m Vessels in the Regional Study Area, Nephrops Gear Only, 2009
16.10	Nephrops Fishing Grounds by Vessel
16.11	Whitefish Fishing Grounds by Vessel
16.12	Moray Firth Commercial Landings Demersal Finfish, Over-15m Vessels only, 2009
16.13	Satellite (VMS) Density of UK over-15m Vessels in the Regional Study Area, Whitefish Gear Only, 2009
16.14	Satellite (VMS) Density of UK over-15m Vessels in the Regional Study Area, "Other" Gear Only, 2009
16.15	Moray Firth Commercial Fishing Gears Distribution, Over-15m Vessels only, 2009
16.16	Squid Fishing Grounds by Vessel
16.17	Creel Fishing Grounds by Vessel
16.18	Average Annual Reported Catch by Methods in SFDs within the National Study Area (average 2000-2009)
16.19	Average Annual Reported Catch by Species in SFDs within the Regional Study Area (average 2000-2009)
16.20	Average Annual Reported Catch by Method in SFDs within the Regional Study Area (average 2000-2009)

16.21	Location of Beatrice Offshore Wind Farm relative to Salmon Fishery Districts in the Local Study Area
17.1	Indicative 35 dB LA90 Contour for 7 MW Scenario
18.1	Navigational Features
18.2	Gargano Survey Data
18.3	Chartwell Survey Data
18.4	Detailed Plot of the June Chartwell/Gargano Tracks Passing Beatrice Offshore Wind Farm 68 Days
18.5	Detailed Plot of the Combined Survey Tracks by Type on NE-SW Shipping Route
18.6	RYA Data
18.7	Recreation Survey Tracks
18.8	Fishing Vessel Tracks
18.9	Search and Rescue Helibases
18.10	RNLI Stations
18.11	MAIB Incident Locations
18.12	RNLI Incidents by Casualty Type
18.13	Detailed Plot of the June Chartwell/Gargano Tracks Passing the Beatrice Offshore Wind Farm Turbines 68 Days
18.14	Current NE-SW Mean Route Positions
19.1	Moray Firth Airspace
19.2	Wick VOR/DME Runway 31 Procedure
19.3	Wick Direct Arrivals to VOR/DME Runway 31 Procedure
19.4	Wick NDB(L)/DME Runway 31 Procedure
19.5	Wick Direct Arrivals to NDB(L)/DME Runway 31 Procedure
19.6	Offshore Platforms in Relation to the Application Site

20.1	Socio-economic Assessment Study Area
20.2	SIMD Rankings
20.3	Socio-economic Profile Within 40km Zone
20.4	Accommodation and Bed Spaces Within 40km Zone
22.1	Overlay of Habitat Classification with Seabed Data
23.1	Study Area
23.2	Annual Landing Weights (average 2000-2009) by Species in the Study Area (MMO, 2010)
23.3	Cod Spawning and Nursery Grounds
23.4	Herring Spawning and Nursery Grounds
23.5	Lemon Sole Spawning and Nursery Grounds
23.6	Nephrops Spawning and Nursery Grounds
23.7	Plaice Spawning and Nursery Grounds
23.8	Sandeel Spawning and Nursery Grounds
23.9	Sprat Spawning and Nursery Grounds
23.10	Whiting Spawning and Nursery Grounds
23.11	Nursery Grounds
23.12	Seabed Sediment Type Along the Offshore Transmission Works Corridor
24.1	Predicted Zones of Impact from Noise Associated with the Transmission Works on the Density of Bottlenose Dolphins
24.2	Predicted Zones of Impact from Noise Associated with the Transmission Works on the Density of Harbour Porpoise
24.3	Predicted Zones of Impact from Noise Associated with the Transmission Works on the Proportion of the Harbour Seals from the Moray Firth
24.4	Predicted Zones of Impact from Noise Associated with the Transmission Works on the Density of Grey Seal

26.1	Location of Recorded Archaeological Sites (North)
26.2	Location of Recorded Archaeological Sites (South)
26.3	Location of Recorded Archaeological Sites (Landfall Detail)
27.1	Study Area
27.2	BOWL Export Cable Route Study Areas for Salmon and Sea Trout
27.3	Relative Value by Species in the Study Area
27.4	Relative Value by Method in the Study Area
27.5	Relative Value by Vessel Size in the Study Area
27.6	Satellite (VMS) Density of All UK over-15m Vessels in the Study Area
27.7	Satellite (VMS) Density of All UK over-15m Vessels in the Study Area, 2009
27.8	Satellite (VMS) Density of All UK over-15m Vessels in the Study Area, Nephrops Gear Only, 2009
27.9	Satellite (VMS) Density of All UK over-15m Vessels in the Study Area, Dredge Gear Only, 2009
27.10	Satellite (VMS) Density of All UK over-15m Vessels in the Study Area, 'Other' Gear Only, 2009
27.11	Satellite (VMS) Density of All UK over-15m Vessels in the Study Area, Whitefish Gear Only, 2009
27.12	Moray Firth Commercial Fishing Gears Distribution, Over-15m Vessels only, 2007
27.13	Moray Firth Commercial Fishing Gears Distribution, Over-15m Vessels only, 2008
27.14	Moray Firth Commercial Fishing Gears Distribution, Over-15m Vessels only, 2009
27.15	Moray Firth Commercial Landings Finfish, Over-15m Vessels only, 2007
27.16	Moray Firth Commercial Landings Finfish, Over 15m-Vessels only, 2008
27.17	Moray Firth Commercial Landings Finfish, Over-15m Vessels only, 2009

27.18	Moray Firth Commercial Landings Demersal Finfish, Over-15m Vessels only, 2009
27.19	Moray Firth Commercial Landings Shellfish, Over-15m Vessels only, 2007
27.20	Moray Firth Commercial Landings Shellfish, Over-15m Vessels only, 2008
27.21	Moray Firth Commercial Landings Shellfish, Over-15m Vessels only, 2009
27.22	Nephrops Fishing Grounds by Vessel
27.23	Scallop Fishing Grounds by Vessel
27.24	Squid Fishing Grounds by Vessel
27.25	Whitefish Fishing Grounds by Vessel
27.26	Creel Fishing Grounds by Vessel
27.27	Average Annual Reported Catch by Methods in SFDs within the National Study Area (average 2000-2009)
27.28	Average Annual Reported Catch by Species in SFDs within the Regional Study Area (average 2000-2009)
27.29	Average Annual Reported Catch by Method in SFDs within the Regional Study Area (average 2000-2009)
27.30	Location of the Export Cable Route Landfall Site relative to the Spey District and River
28.1	Overview of Navigational Features off Cable Route Land Fall
28.2	Gargano Survey Data by Ship Type November to January 2011(28 days AIS tracks)
28.3	Chartwell Survey Data by Ship Summer July 2010 (28 days AIS tracks)
28.4	Overview Plot of Chartwell (28 days) and Gargano (28 days) Anchored Vessel Tracks within 10nm of Cable Corridor
28.5	Detailed Plot of the 28 days Chartwell July data and 28 days Gargano Survey Anchored Vessel Tracks in Spey Bay
28.6	Detailed Recreational Sailing Information Relative to the Offshore Transmission Works Corridor
28.7	Fishing Vessel Tracks during Combined Surveys (56 Days)

28.8	MAIB Incident Locations by Type within 10nm of BOWL Export Cable Route
28.9	RNLI Incidents by Casualty Type within 10nm of BOWL Export Cable Route
30.1	Offshore Military Exercise Areas
30.2	Offshore Telecommunications, Pipelines and Cables
30.3	Ports and Harbours
30.4	Oil and Gas Infrastructure

Please note that Figures associated with Environmental Statement Section 14: Seascape, Landscape and Visual Assessment are provided in Volume 3 of this ES.