



Stronelaig Wind Farm Proposal
May 2012

Drumderg wind farm, near Alyth, Perthshire – 16 turbines (blade tip height of 100 metres)

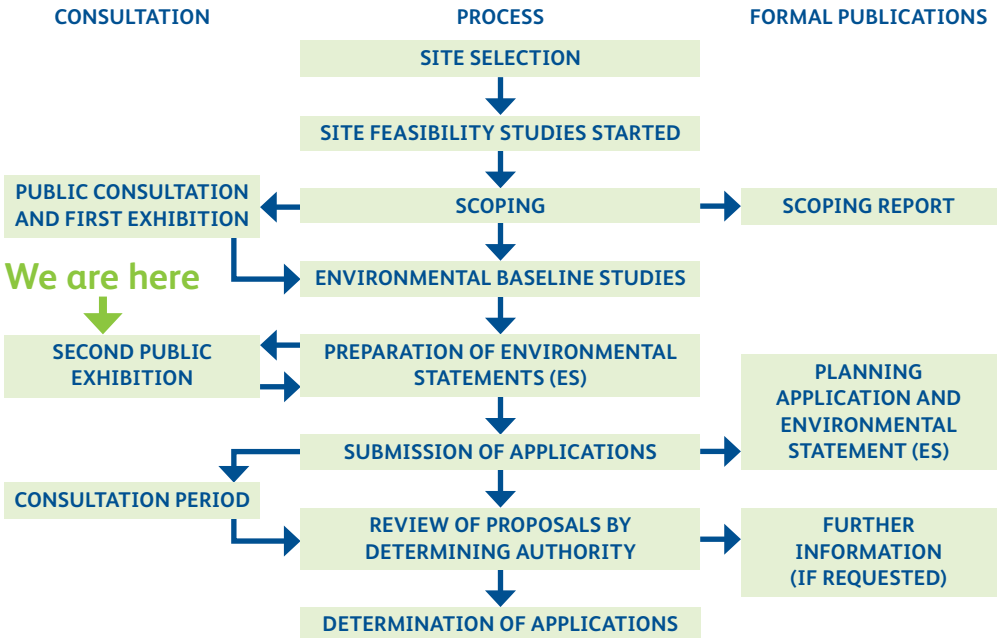
About SSE Renewables

SSE Renewables is the renewable energy development division of SSE. The company is responsible for the development of onshore and offshore wind farms in the UK, the Republic of Ireland and Europe, as well as developing hydro and marine projects. Through its various guises, SSE has been part of the Highland community for more than 60 years and, as the UK's leading generator of renewable energy, is extremely proud of its hydro heritage.

We are committed to helping meet Scotland's climate change targets and believe that renewable energy plays an important part in this.

It is estimated that Scotland has 25% of Europe's wind resource and wind power is one of the most developed of the renewable technologies, which is why we have over 20 onshore wind farms in operation in Scotland and Ireland, in addition to those in development or under construction. As the UK's leading generator of renewable energy, we are proud to be at the forefront of developing renewables and helping tackle climate change.

Development process



The proposal

The proposed site area, shown below, is owned by Garrogie Estate. It is located on a remote plateau in the Monadhliath mountains approximately 11km to the east of Fort Augustus. The wind farm has been designed to eliminate any views from the major tourist attractions around the shores of Loch Ness and the Great Glen. Stronelairst is situated in Highland Council's 'Broad Area of Search' for wind farms.



Red line site boundary

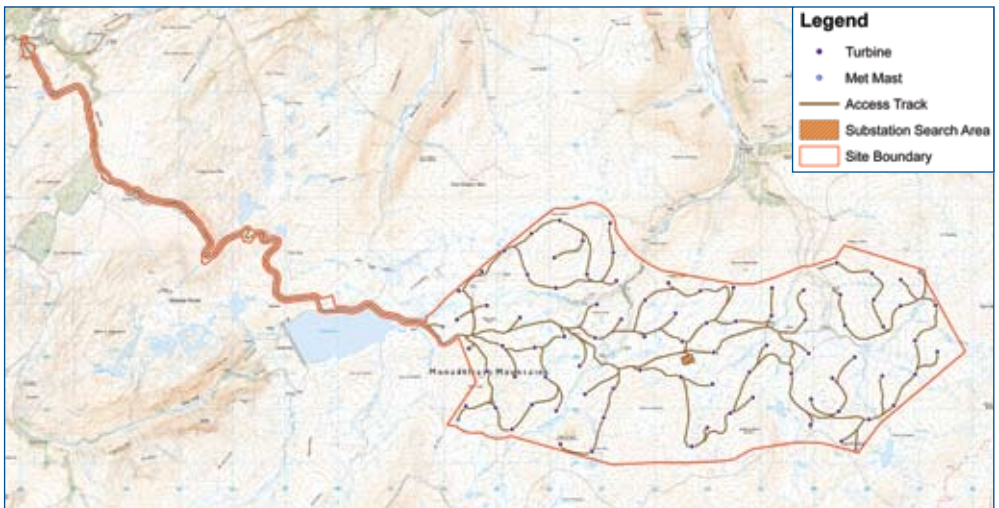
Background

The project design has been informed by findings obtained from public consultation combined with results from a detailed Environmental Impact Assessment (EIA). The layout for the development consists of 83 wind turbines, with a maximum tip height of up to 135m. One of the main benefits of constructing and operating a wind farm in this location is the ability to make use of the extensive infrastructure already in place for the existing Glendoe Hydro Electric scheme.

Components

The main elements of the Development would include:

- 83 wind turbines and associated infrastructure;
 - Crane hardstandings;
 - On-site access tracks and passing bays (utilising existing hydroelectric scheme tracks where possible);
 - 4 meteorological masts;
 - Electrical substation (on-site); and
 - Temporary works would include construction compounds, borrow pits (from which construction aggregates would be extracted) and laydown areas.
- Existing infrastructure from the Glendoe Hydro Electric Scheme would be used for these purposes where practicable.



Community benefits

In recognition of the part that communities play in hosting renewable generation projects, we establish long-term community funds to support community projects and initiatives throughout the life of the wind farm. During the construction period, local companies would be given the opportunity to offer their services and in addition to this, there are likely to be longer-term roles required as part of the operation and maintenance of the wind farm. Roles and services that may be sourced locally will relate to the on-site and ancillary works and will depend on the skills and services available.

We are keen to ensure that communities receive meaningful long-term benefit from projects in their area, and that they will create genuine short and long-term local employment opportunities, which will help to strengthen communities and encourage local economic growth.

SSE is committed to maximizing opportunities for local businesses and services, ensuring a positive lasting legacy for the communities around our projects and for the Highlands as a whole.

How do I comment on the proposals

During the consultation period SSE will consult with community councils, government agencies and any other stakeholders.

Once the consultation period begins individuals can make representation at the following address:

representations@scotland.gsi.gov.uk

Energy Consents and Deployment Unit
Scottish Government
4th Floor
5 Atlantic Quay
150 Broomielaw
Glasgow
G2 8LU

What happens next?

It is anticipated that an application to the Scottish Government will be made in the coming weeks. As the application is greater than 50MW the application will be made to Scottish Ministers. The Highland Council will be consulted as a statutory consultee and will provide Scottish Government with a recommendation during the application process.

Once the application is registered a statutory consultation period will begin. This period allows non-statutory consultees 28 days to make representations on the application to the Energy Consents Unit. The application will be advertised over a two week period with the statutory time period starting from the date of the second advert.

Contact Us:

Please do not hesitate to contact us with any queries you may have about this proposal.

Contact details for our Liaison Manager are as follows:

Marianne Townsley
SSE Renewables
10 Henderson Road
Inverness
IV1 1SN
Telephone: 01463 728069
Email: marianne.townsley@sse.com

www.sse.com/stronelaigr