

Annex J

## Socio-economic: Supporting Baseline Information

**J1.1 BASELINE CONDITIONS**

Baseline conditions in relation to the following socio-economic receptor groups are considered in turn:

- demography;
- deprivation;
- employment and economic profile;
- business operators; and
- recreational, community and tourism features and visitor economy.

Super Output Areas (SOAs) are the smallest land parcels for which census and other socio-economic data are collected. The Proposed Development is located within SOAs North Lincolnshire 006A and 006C which are both within Axholme North Ward, North Lincolnshire District, and Yorkshire and the Humber.

The local area of influence comprises the following:

- North Lincolnshire 006A SOA;
- North Lincolnshire 006C SOA;
- Axholme North Ward;
- Bassetlaw District;
- City of Kingston upon Hull;
- Doncaster District;
- East Riding of Yorkshire;
- North Lincolnshire;
- Selby District; and
- West Lindsey District.

The wider area of influence comprises the following:

- Barnsley District;
- Bassetlaw District;
- City of Kingston upon Hull;
- Doncaster District;
- East Lindsey District;
- East Riding of Yorkshire;
- Leeds District;
- Lincoln District;
- Mansfield District;
- Newark and Sherwood District;
- North East Lincolnshire;
- North Kesteven District;
- North Lincolnshire;
- Rotherham District;
- Selby District;
- Wakefield District;

- West Lindsey District; and
- York.

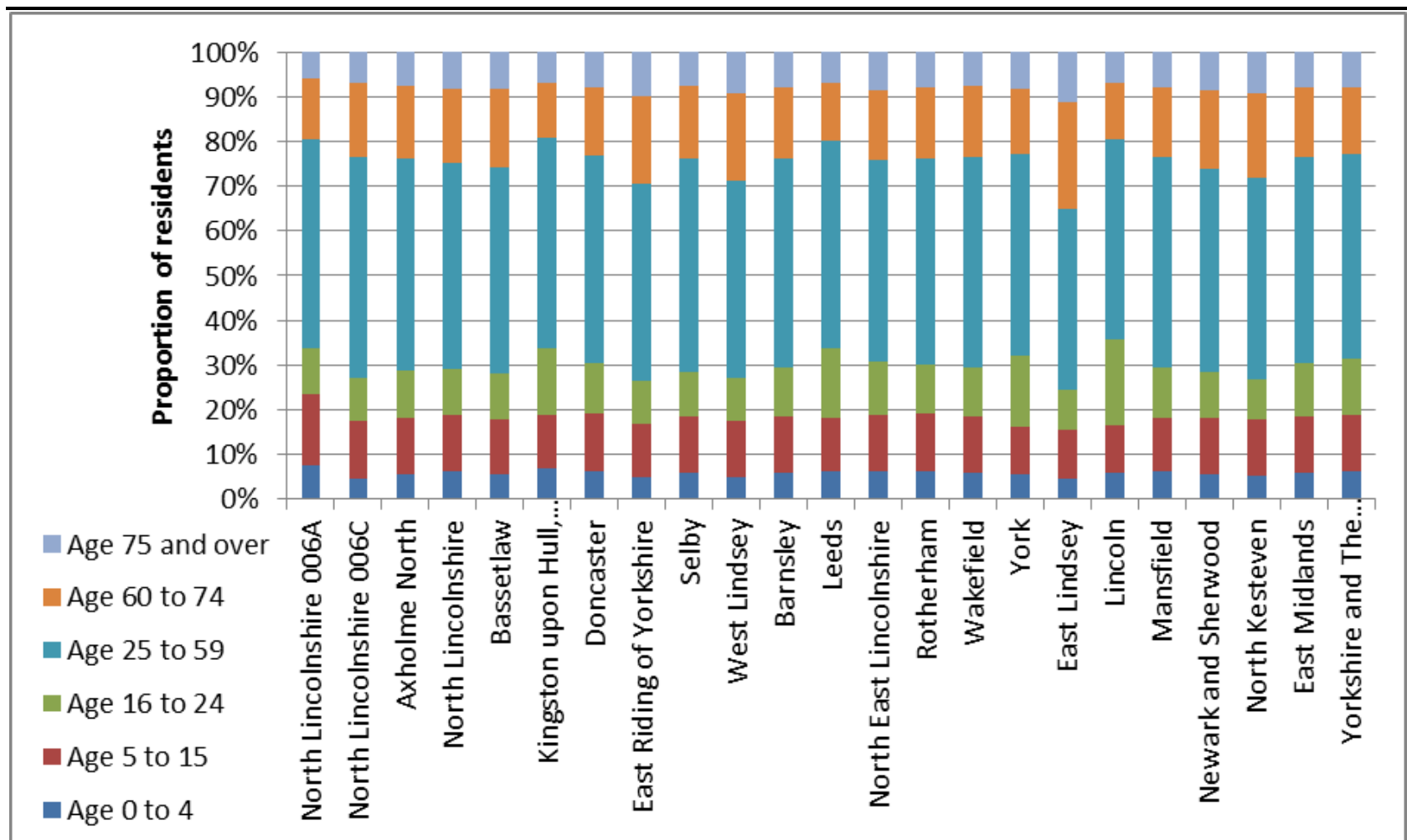
The wider region comprises the following:

- East Midlands; and
- Yorkshire and the Humber.

A summary of the baseline situation for the local area of influence is presented within the main assessment chapter (*Section 12.3*).

### J1.1.1 Demography

Figure 1.1 Age Profile of Local and Wider Area of Influence, 2011



Source: ONS Neighbourhood Statistics, 2011 (KS102EW), <http://neighbourhood.statistics.gov.uk/dissemination/> website accessed 10/06/2015

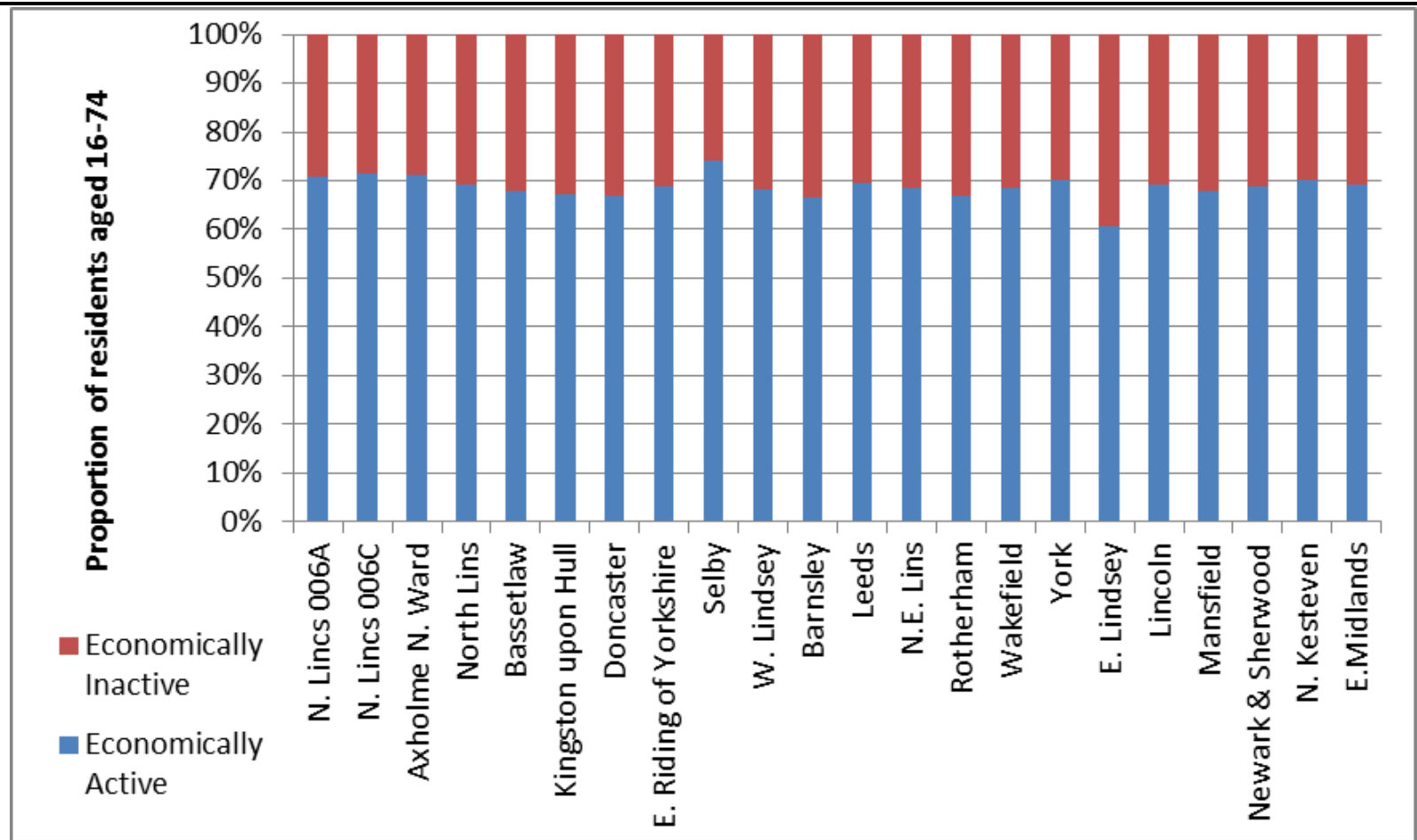
**Table 1.1 Age Profile of Local and Wider Area of Influence, 2011**

	N. Lincs 006A	N. Lincs 006C	Axholme N.	N. Lincs	Bassetlaw	Kingston upon Hull	Doncaster	E. Riding of Yorkshire	Selby	W. Lindsey	Barnsley	Leeds	N.E. Lincs	Rotherham	Wakefield	York	E. Lindsey	Lincoln	Mansfield	Newark & Sherwood	N. Kesteven	E. Midlands	Yorks & The Humber
0 to 4	8%	5%	6%	6%	5%	7%	6%	5%	6%	5%	6%	6%	6%	6%	6%	5%	5%	6%	6%	6%	5%	6%	6%
5 to 15	16%	13%	13%	13%	12%	12%	13%	12%	13%	12%	13%	12%	13%	13%	12%	11%	11%	11%	12%	13%	13%	13%	13%
16 to 24	10%	10%	10%	10%	10%	15%	11%	10%	10%	10%	11%	15%	12%	11%	11%	16%	9%	19%	11%	10%	9%	12%	13%
25 to 59	47%	49%	47%	46%	46%	47%	46%	44%	48%	44%	47%	46%	45%	46%	47%	45%	41%	45%	47%	46%	45%	46%	46%
60 to 74	14%	17%	17%	17%	17%	13%	15%	20%	16%	20%	16%	13%	16%	16%	16%	14%	24%	12%	15%	18%	19%	16%	15%
75 and over	6%	7%	7%	8%	8%	7%	8%	10%	8%	9%	8%	7%	8%	8%	8%	8%	11%	7%	8%	9%	9%	8%	8%

Source: ONS Neighbourhood Statistics, 2011 (KS102EW), <http://neighbourhood.statistics.gov.uk/dissemination/> website accessed 10/06/2015

**J1.1.2 Employment and Economic Profile**

**Figure 1.2 Economic Activity in the Local and Wider Area of Influence, 2011**



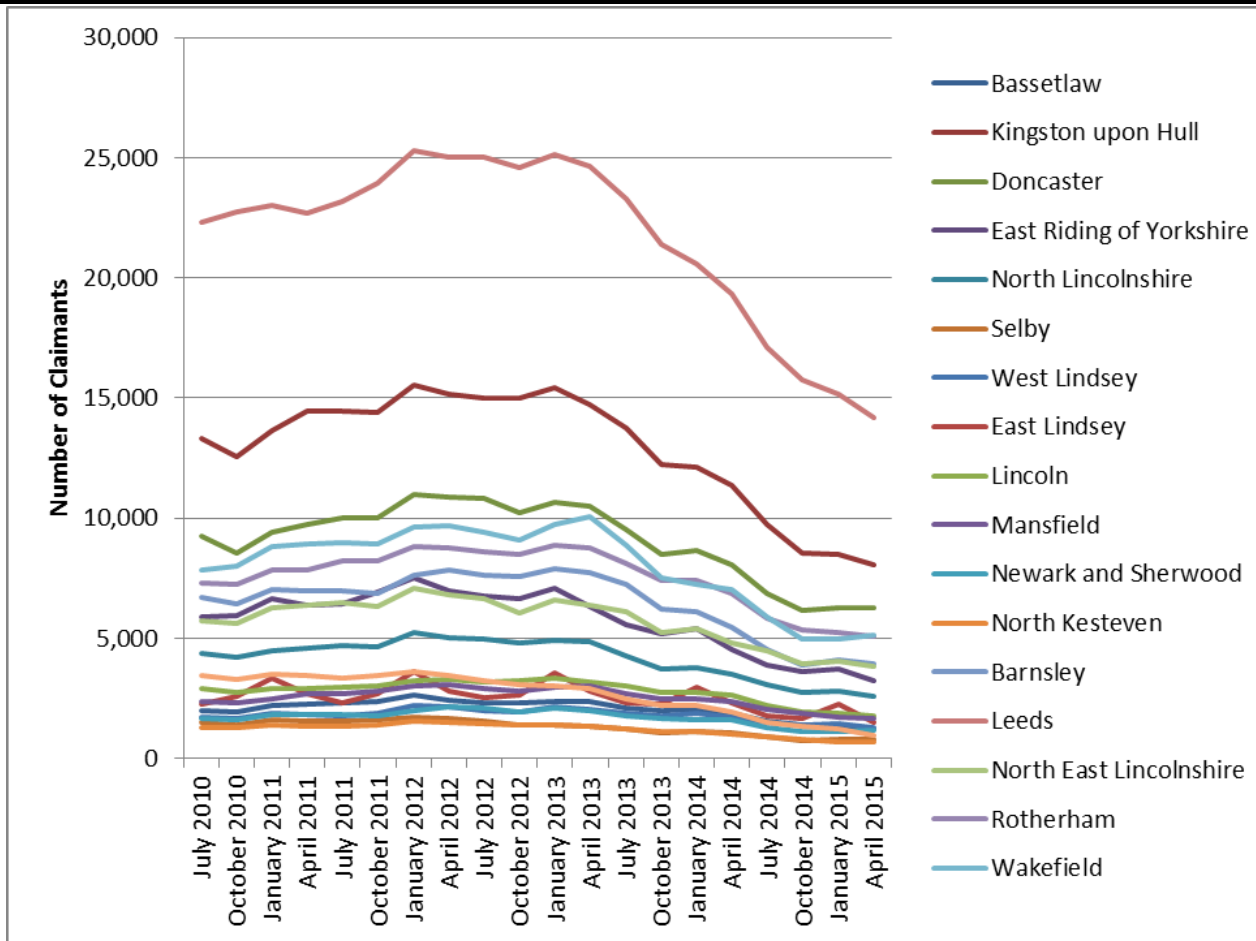
Source: ONS Neighbourhood Statistics, 2011 (QS601EW), <http://neighbourhood.statistics.gov.uk/dissemination/> website accessed 10/06/2015

**Table 1.2 Economic Activity in the Local and Wider Area of Influence, 2011**

Proportion of residents aged 16-74	N. Lincs 006A	N. Lincs 006C	Axholme N.	North Lins	Bassetlaw	Kingston upon Hull	Doncaster	E. Riding of Yorkshire	Selby	W. Lindsey	Barnsley	Leeds	N.E. Lins	Rotherham	Wakefield	York	E. Lindsey	Lincoln	Mansfield	Newark & Sherwood	N. Kesteven	E. Midlands	Yorks & The Humber
Economically Active	71	71	71	69	68	67	67	69	74	68	66	70	68	67	68	70	61	69	68	69	70	69	68
Economically Inactive	29	29	29	31	32	33	33	31	26	32	34	30	32	33	32	30	39	31	32	31	30	31	32

Source: ONS Neighbourhood Statistics, 2011 (QS601EW), <http://neighbourhood.statistics.gov.uk/dissemination/> website accessed 10/06/2015

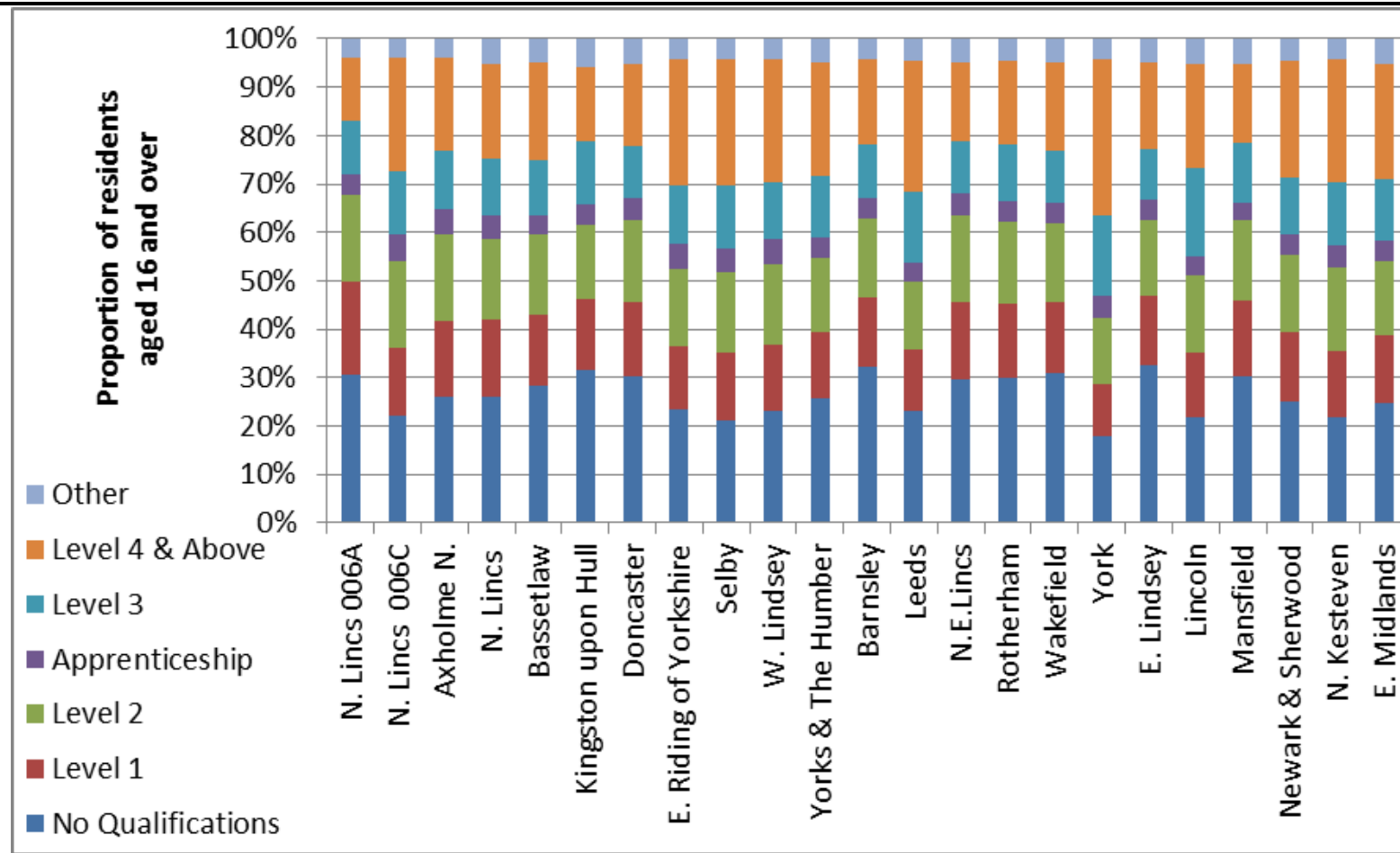
**Figure 1.3 Job Seekers Allowance Claimants in the Local and Wider Area of Influence, 2011**



Source: Nomis, <https://www.nomisweb.co.uk/query/construct/submit.asp?forward=yes&menuopt=201&subcomp> (website accessed 11/06/2015)



Figure 1.4 Highest Level of Qualification Achieved of residents within the Local and Wider Area of Influence aged 16 and over, 2011



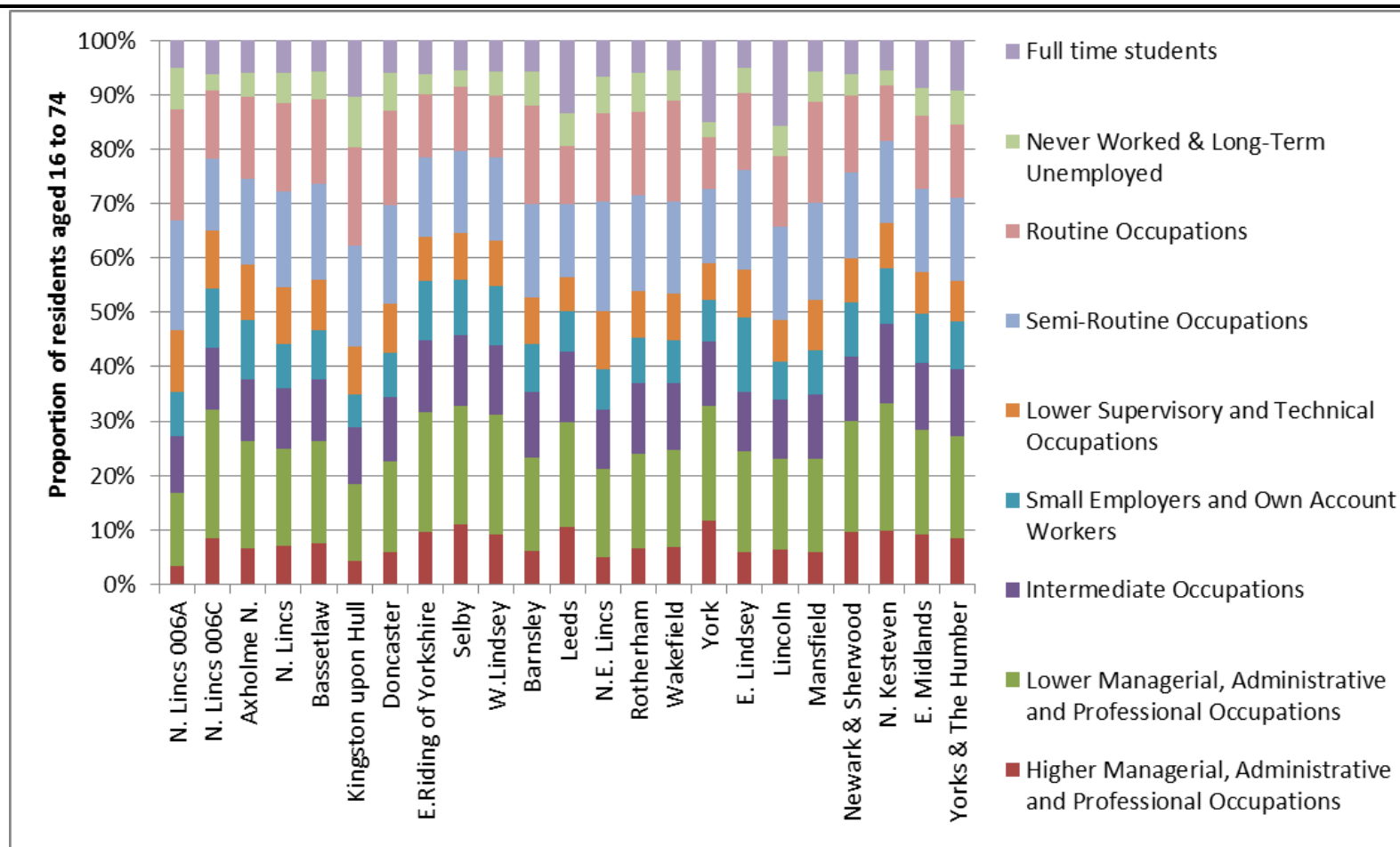
Source: ONS Neighbourhood Statistics, 2011 (QS501EW), <http://neighbourhood.statistics.gov.uk/dissemination/> website accessed 10/06/2015

**Table 1.3 Highest Level of Qualification Achieved of residents within the Local and Wider Area of Influence aged 16 and over, 2011**

Proportion of residents aged 16-74																							
	N. Lincs 006A	N. Lincs 006C	Axholme N.	N. Lincs	Bassetlaw	Kingston upon Hull	Doncaster	E. Riding of Yorkshire	Selby	W. Lindsey	Barnsley	Leeds	N.E.Lincs	Rotherham	Wakefield	York	E. Lindsey	Lincoln	Mansfield	Newark & Sherwood	N. Kesteven	E. Midlands	Yorks & The Humber
No Qualifications	31	22	26	26	28	32	30	23	21	23	32	23	30	30	31	18	33	22	30	25	22	25	26
Level 1 Qualifications	19	14	16	16	15	15	15	13	14	14	14	13	16	16	15	11	14	13	16	14	14	14	14
Level 2 Qualifications	18	18	18	17	16	15	17	16	17	17	16	14	18	17	16	14	16	16	16	16	17	16	15
Apprenticeship	4	6	5	5	4	4	4	5	5	5	4	4	5	4	4	4	4	4	4	4	4	4	4
Level 3 Qualifications	11	13	12	12	11	13	11	12	13	12	11	15	11	12	11	17	10	18	12	12	13	13	13
Level 4 Qualifications and Above	13	23	19	20	20	15	17	26	26	25	17	27	16	17	18	32	18	21	16	24	25	24	23
Other	4	4	4	5	5	6	5	4	4	4	4	5	5	5	5	4	5	5	5	5	4	5	5

Source: ONS Neighbourhood Statistics, 2011 (QS501EW), <http://neighbourhood.statistics.gov.uk/dissemination/> website accessed 10/06/2015

**Figure 1.5 Occupation Type of Residents Aged 16-74 within the Local and Wider Area of Influence, 2011**



Source: ONS Neighbourhood Statistics, 2011 (QS607EW), <http://neighbourhood.statistics.gov.uk/dissemination/> website accessed 10/06/2015

**Table 1.4 Occupation Type of Residents Aged 16-74 within the Local and Wider Area of Influence, 2011**

	N. Lincs 006A	N. Lincs 006C	Axholme N.	N. Lincs	Bassetlaw	Kingston upon Hull	Doncaster	E. Riding of Yorkshire	Selby	W. Lindsey	Barnsley	Leeds	N.E. Lincs	Rotherham	Wakefield	York	E. Lindsey	Lincoln	Mansfield	Newark & Sherwood	N. Kesteven	E. Midlands	Yorks & The Humber
Higher Managerial, Administrative and Professional Occupations	3	8	7	7	7	4	6	10	11	9	6	10	5	6	7	12	6	6	6	10	10	9	8
Lower Managerial, Administrative and Professional Occupations	13	24	20	18	19	14	17	22	22	22	17	19	16	17	18	21	18	17	17	21	24	19	19
Intermediate Occupations	10	11	11	11	11	11	12	13	13	13	12	13	11	13	12	12	11	11	12	12	14	12	12
Small Employers and Own Account Workers	8	11	11	8	9	6	8	11	10	11	9	7	7	8	8	8	14	7	8	10	10	9	9
Lower Supervisory and Technical Occupations	11	11	10	10	9	9	9	8	8	8	9	6	11	8	9	7	9	8	9	8	8	8	8
Semi-Routine Occupations	20	13	16	18	18	19	18	15	15	15	17	13	20	18	17	14	18	17	18	16	15	15	15
Routine Occupations	20	13	15	16	16	18	17	12	12	11	18	11	16	15	19	9	14	13	18	14	10	14	13
Never Worked & Long-Term Unemployed	8	3	5	6	5	9	7	4	3	4	6	6	7	7	6	3	5	6	6	4	3	5	6
Full time students	5	6	6	6	6	10	6	6	6	6	6	13	7	6	5	15	5	16	6	6	5	9	9

Source: ONS Neighbourhood Statistics, 2011 (QS607EW), <http://neighbourhood.statistics.gov.uk/dissemination/> website accessed 10/06/2015

**Table 1.5 Occupation Type of Residents Aged 16-74 within the Local and Wider Area of Influence, 2011**

	N. Lincs 006A	N. Lincs 006C	Axholme N.	N. Lincs	Bassetlaw	Kingston upon Hull	Doncaster	E. Riding of Yorkshire	Selby	W. Lindsey	Barnsley	Leeds	N.E. Lincs	Rotherham	Wakefield	York	E. Lindsey	Lincoln	Mansfield	Newark & Sherwood	N. Kesteven	E. Midlands	Yorks & The Humber
C Manufacturing	19	14	15	19	13	15	11	11	12	11	13	8	16	13	11	7	9	11	12	12	10	13	11
F Construction	9	11	10	8	9	8	10	8	8	8	11	7	8	10	9	7	8	8	10	9	8	8	8
G Wholesale and Retail Trade; Repair of Motor Vehicles and Motor Cycles	16	16	17	17	19	18	19	16	16	16	18	16	19	17	20	16	17	19	19	17	16	18	17
H Transport and Storage	9	7	8	7	5	5	7	5	5	5	5	4	8	5	6	5	4	4	5	5	4	5	5
Q Human Health and Social Work Activities	13	12	12	13	15	13	13	14	11	14	14	13	13	13	13	13	13	14	14	12	13	13	13
N Administrative and Support Service Activities	6	4	4	4	3	6	5	4	4	4	5	5	4	5	5	4	4	5	4	4	3	4	5
P Education	6	9	8	8	8	8	9	11	9	11	9	10	9	9	8	12	10	9	8	9	9	10	10
O Public Administration and Defence; Compulsory Social Security	4	6	5	5	5	6	6	8	6	8	6	5	5	5	6	6	7	7	6	7	15	6	6
I Accommodation and Food Service Activities	5	4	5	5	5	6	5	5	5	4	5	6	5	5	5	8	9	7	6	6	4	5	6

Source: ONS Neighbourhood Statistics, 2011 (QS605EW), <http://neighbourhood.statistics.gov.uk/dissemination/> website accessed 10/06/2015